



Our success does not depend on what we say,  
what we hear, what we feel nor what we see.

It depends on what we do.



SOURCEWISE  
COMMUNITY RESOURCE SOLUTIONS



# Commitment to Solutions

At Sourcewise, we collaborate with Santa Clara County, state, and local networks to provide a streamlined approach to service and support systems. We empower individuals by providing access to information, allowing for personal choices, and continued independence. We strive to create a community-based system of care that crosses city boundaries, income levels, geography, special interests, and political agendas.

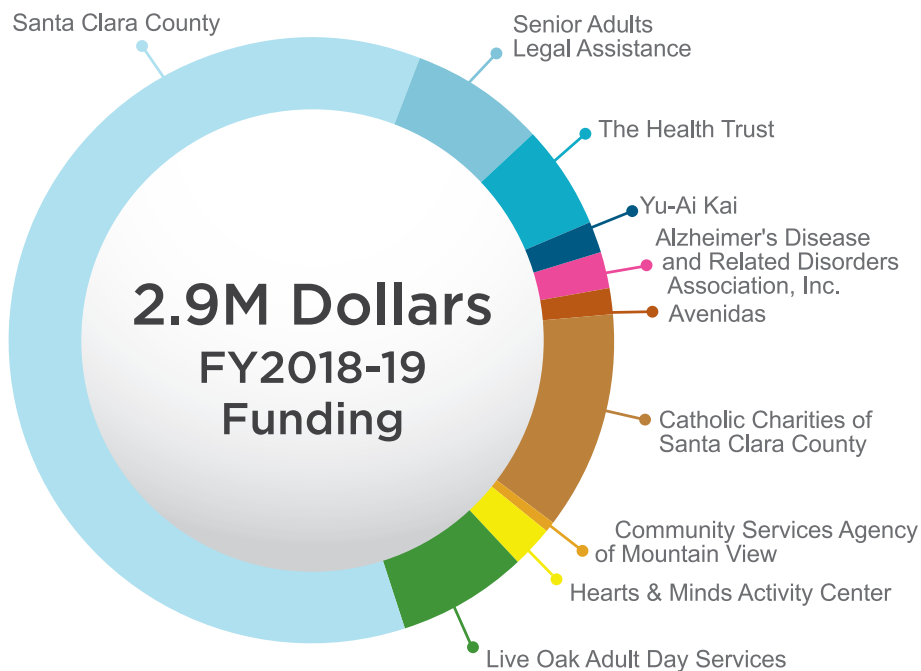


## COMMUNITY IMPACT

Investing in partnerships allows Sourcewise to expand service offerings of vital programs and services for our target consumer.



**10** Organizations Awarded Monies



As a nonprofit organization, we believe in the importance of community. Since 1973, we have provided education, expertise, and quality support services for Santa Clara County seniors to age well at home. Now, we look to build a stronger, more accessible network of resources for all adults in Santa Clara County. We achieve our goals with the assistance of generous donations from members of our community.

# in Fiscal Year 2017-2018

## Sourcewise Provided

<p><b>674,302</b> Home-Delivered Meals to <b>2,519</b> Individuals served</p> 	<p><b>397</b> Individuals with nutritional education on the topics of Nutritional Supplements, Fiber, Nutrition &amp; Health</p> 	<p><b>500</b> Farmers' Market nutrition vouchers to individuals needing food assistance, 23% of whom were caregivers</p> 	<p><b>5,305</b> Individuals newly enrolled as homecare providers</p> 	<p><b>81</b> Individuals with rides to community/ senior centers for socialization and meal options</p> 
<p><b>5,769</b> Individuals with information on available services, at community events, 12% of whom were caregivers</p> 	<p><b>18,078</b> Individuals with a customized lists of referrals to community services</p> 	<p><b>1,973</b> Homecare providers with training</p> 	<p><b>923</b> Service providers listed in our public resource directory including 25 new providers</p> 	<p><b>122</b> Classes offered to homecare providers, in 4 languages</p> 
<p><b>9,683</b> Individuals with health insurance education and information</p> 	<p><b>81</b> Opportunities for individuals to learn about Medicare changes for 2018</p> 	<p><b>37</b> State-registered Health Insurance counseling volunteers <b>10</b> Languages spoken by staff and volunteers</p> 	<p><b>40</b> Counseling sites located conveniently throughout Santa Clara County</p> 	<p><b>60</b> Unpaid caregivers with temporary respite and a connection to existing resources for further support</p> 
<p><b>21,800</b> Homecare providers with health/dental/vision and transportation benefits</p> 	<p><b>2,132</b> Caregivers with a customized list of referrals to community organizations</p> 	<p><b>3,632</b> Referral lists of available caregivers to individuals needing in-home assistance</p> 	<p><b>463</b> Individuals with a person-centered careplan to keep them safe and living at home</p> 	
<p><b>2,558</b> Individuals with personalized health insurance education and counseling</p> 	<p><b>756</b> Individuals with in-home visits to assess needs and provide access to food</p> 	<p><b>440</b> Individuals with customized guidance and assistance to manage their caregiver relationship</p> 	<p><b>6,684</b> Problem solving discussions and interventions with Consumers and homecare providers</p> 	
<p><b>205</b> Individuals with employment assistance</p> 	<p><b>10</b> Participants with unsubsidized employment <b>37</b> Individuals with supervised on-the-job training</p>  	<p><b>127</b> Events throughout Santa Clara County in which Sourcewise participated or presented information on services available</p> 	<p><b>7</b> Community-based organizations who hosted Employment participants</p> 	

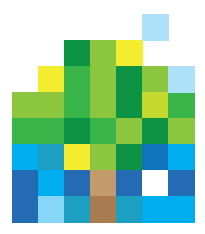


## Public Authority Services

by Sourcewise

[mysourcewise.com](http://mysourcewise.com)

Sourcewise is a 501(c)(3) nonprofit organization. We are non-partisan and do not endorse political candidates. Donations to Sourcewise are tax deductible.



# SOURCEWISE

COMMUNITY RESOURCE SOLUTIONS

2115 The Alameda  
San Jose, CA 95126  
(408) 350-3200

16340 Monterey Road  
Morgan Hill, CA 95037  
(408) 762-7362