



Our success does not depend on what we say,
what we hear, what we feel nor what we see.

It depends on what we do.

Impact Report
Fiscal Year 2020-2021



SOURCEWISE
COMMUNITY RESOURCE SOLUTIONS

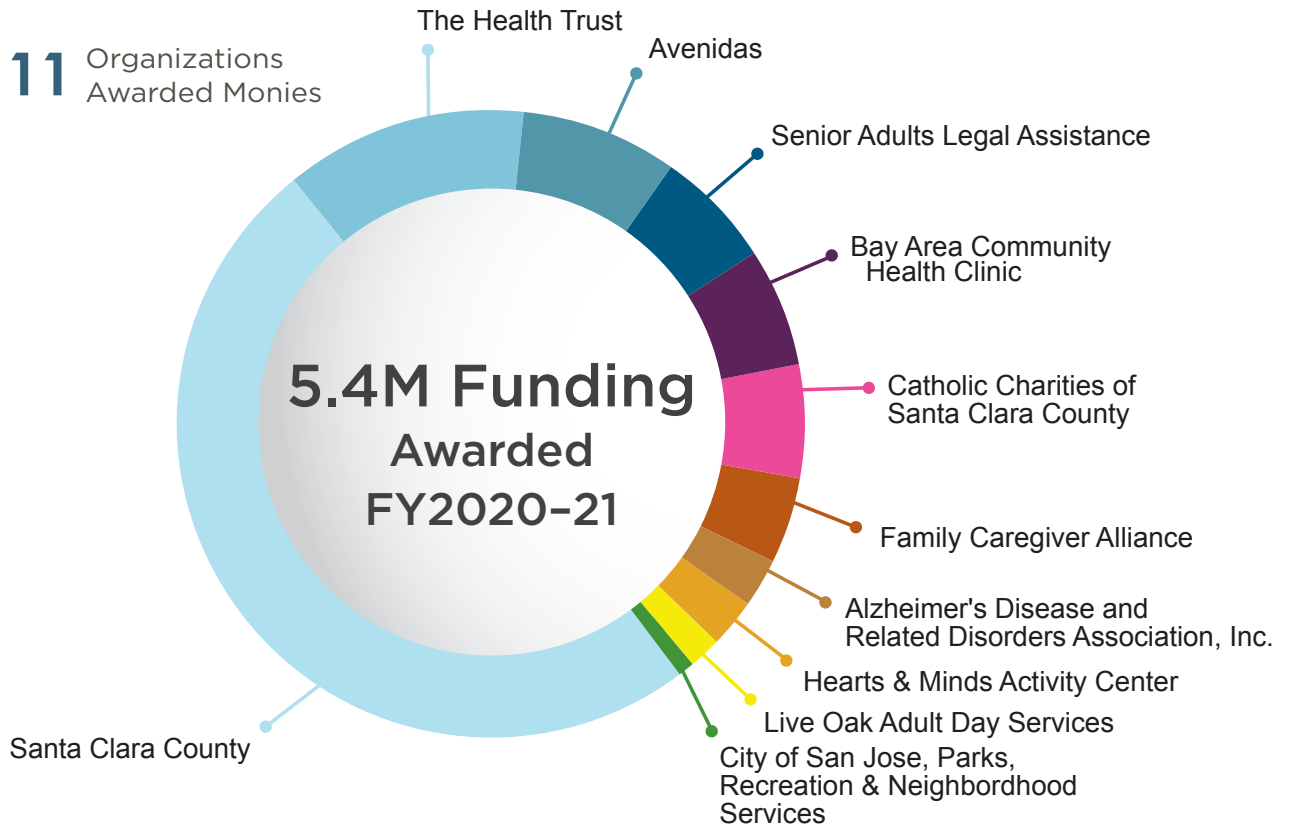


Commitment to Solutions

At **Sourcewise**, we collaborate with Santa Clara County, state, and local network of community partners to provide a streamlined approach to culturally and ethnically diverse services and support systems. We empower older adults and caregivers by providing access to comprehensive information, allowing for personal choices, and continued independence. We aim to provide a community-based system of care that crosses city boundaries, income levels, geography, and special interests.

As a **funder**, each year, we invest in over a dozen partnering community-based organizations through annual grants to expand service offerings of vital programs and services which meet the diverse needs of the Santa Clara County older adult and caregiver population.

Community Impact



Vital Programs and Services delivered in partnership:

- Adult Day Care/Health Services
- Caregiver Education & Resources
- Caregiver Training
- Grandparent Caregiver Support
- Case Management
- Disease Prevention & Health Promotion
- Senior Legal Services
- Long-Term Care Ombudsman Services
- Congregate Meal Nutrition Services
- Home Delivered Meal Nutrition Services

Our Goal

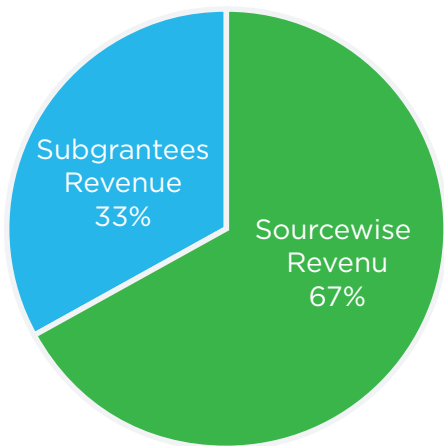
Our goal is to provide leadership addressing issues that relate to older Californians; develop community-based systems of care that provide services which support independence within California's interdependent society; Protect the quality of life of older persons and persons with functional impairments and to promote citizen involvement in the planning and delivery of services.



From July 01, 2020 through June 30, 2021, Sourcewise helped 85,420 seniors and caregivers in Santa Clara County.

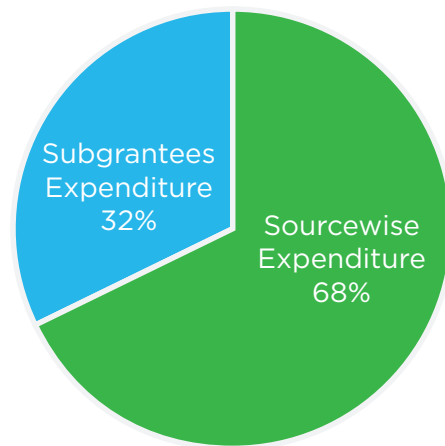
Sourcewise & Subgrantee Total Revenue FY 2020-2021

Total Revenue: \$10,933,462
Subgrantee Revenue: \$5,321,426



Sourcewise & Subgrantee Total Expenditure FY 2020-2021

Total Expenditure: \$11,058,359
Subgrantee Expenditure: \$5,321,426



COVID-19 caused unplanned expenses for technology and infrastructure. In 2020-2021 Sourcewise is focusing efforts on increasing support from volunteers, community partnerships, and contributions.

Funding Received:

- Administration for Community Living
- California Department of Aging
- United States Department of Agriculture
- California Health Advocates Grant Stipend
- County of Santa Clara (PA IHSS and AB 1682)
- California Department of Food & Agriculture
- City of San Jose
- Client Contributions
- Individual Donations

Sourcewise Impact, Fiscal Year 2020-2021



* estimate

mysourcewise.com Access your resource options within our online resource directory.

Who We Are

Sourcewise is one of thirty-three Area Agency on Aging in California and one of six nonprofit organizations in the state providing a comprehensive network of services for older adults, adults with disabilities and caregivers. As a nonprofit organization, we believe in the importance of community. Everyone should have access to information and supportive services that allows for personal choices and continued independence to lead a dignified life.



COVID-19 Response



From July 01, 2020–June 30, 2021

Families First Coronavirus Response Act (FFCRA) (H.R. 6201) emergency nutrition funding to respond to growing nutritional needs of older adults during the COVID-19 pandemic.

 **\$269,000**
funding awarded

 **797,274**

From July 1, 2020 through June 30, 2021 we helped 85,420 Santa Clara County older adults, caregivers, and their families. Sourcewise would like to acknowledge and thank our individual and corporate partners for believing in our agencies mission to provide education, expertise and quality support services.

Organizations

Adobe Inc.	Bay Area Youth Music Society (BAYMS)	JUUL Labs	Patricia Ann Brennan Foundation	Foundation TisBest
Airbnb	Intel Corp.	LinkedIn	Samsara Networks, Inc.	
Amazon Smile	Juniper	Network for Good	The Davidson Family	
Apple		Nvidia		

Individual Donors

Ada Wong	Debbie & Lou Salkind	Jerry Thomas	Liza Calpito	Rosemary Bacy
Aishwariya Jayakumar	Deborah Dixon	Jia Ma	Lois Masin	Sara Johnson
Aneliza Del Pinal	Dien Nguyen	John J Zingrich	Margit David	Sharon Clay
Anita Gong	Edith Gong	Jose Dena	Michael Culcasi	Shir Nehama
April Palacios	Elizabeth Wu	Joseph Novak	Percille Elliott	Sonya Casares
Baruch M and Esperanza Vargas	Eugene Zhang	Josue Covarrubias	Puneet Pathak	Stephanie Hannaford
Brian Potter	Gloria Chiang	Judy Lee	Queruvín Cruz	Swapnil Ghike
Carole L. A. Williams	Gretchen Malay	Julie LaFranboise	Rafael Cardoza	Tram Pham
Charles Cockrell	Heather Severson-Tanez	Khim McNulty-Chase	Raz Mathias	William Bruns
Chi-Jui Chung	Helen A Bobrove	Kyin Fong	Robert MacLaughlin	Xin Hu
David Beaver/Renee Courington	Irene Shoberg	Linda Dietz	Robyn Gerdes	Yatin Gupta
	Jeffrey Tepper	Linda Phillips	Ronald Lloyd	
	Jennifer de Souza	Lisa Whitmore	Rosaura Jimenez	

Grant Funders (Does not include CDA funding)

City of San Jose	Safeway Foundation	National Association of Area Agencies on Aging (N4A)	Silicon Valley Community Foundation
------------------	--------------------	--	-------------------------------------

Sourcewise Programs

Information & Awareness

Senior Nutrition – Meals on Wheels
Care Management
Digital Inclusion
Health Insurance Counseling & Advocacy Program
Senior Employment Services

Public Authority Services

Caregivers Network
Senior Transportation Service
Dignity at Home – Fall Prevention
Google Home Smart Speaker Program
Great Plates Delivered Program

Meals on Wheels COVID-19

San Jose Together, Meals on Wheels Program
Sourcewise Ambassador Program
South County Services

Sourcewise is a 501(c)(3) nonprofit organization. We are non-partisan and do not endorse political candidates. Donations to Sourcewise are tax deductible.



SOURCEWISE
COMMUNITY RESOURCE SOLUTIONS

■ 3100 De La Cruz Blvd, Suite 310
Santa Clara, CA 95054
(408) 350-3200

■ 16340 Monterey Road
Morgan Hill, CA 95037
(408) 762-7362

mysourcewise.com