



Our success does not depend on what we say,  
what we hear, what we feel nor what we see.

It depends on what we do.

Impact Report  
Fiscal Year 2019-2020



SOURCEWISE  
COMMUNITY RESOURCE SOLUTIONS



# Commitment to Solutions

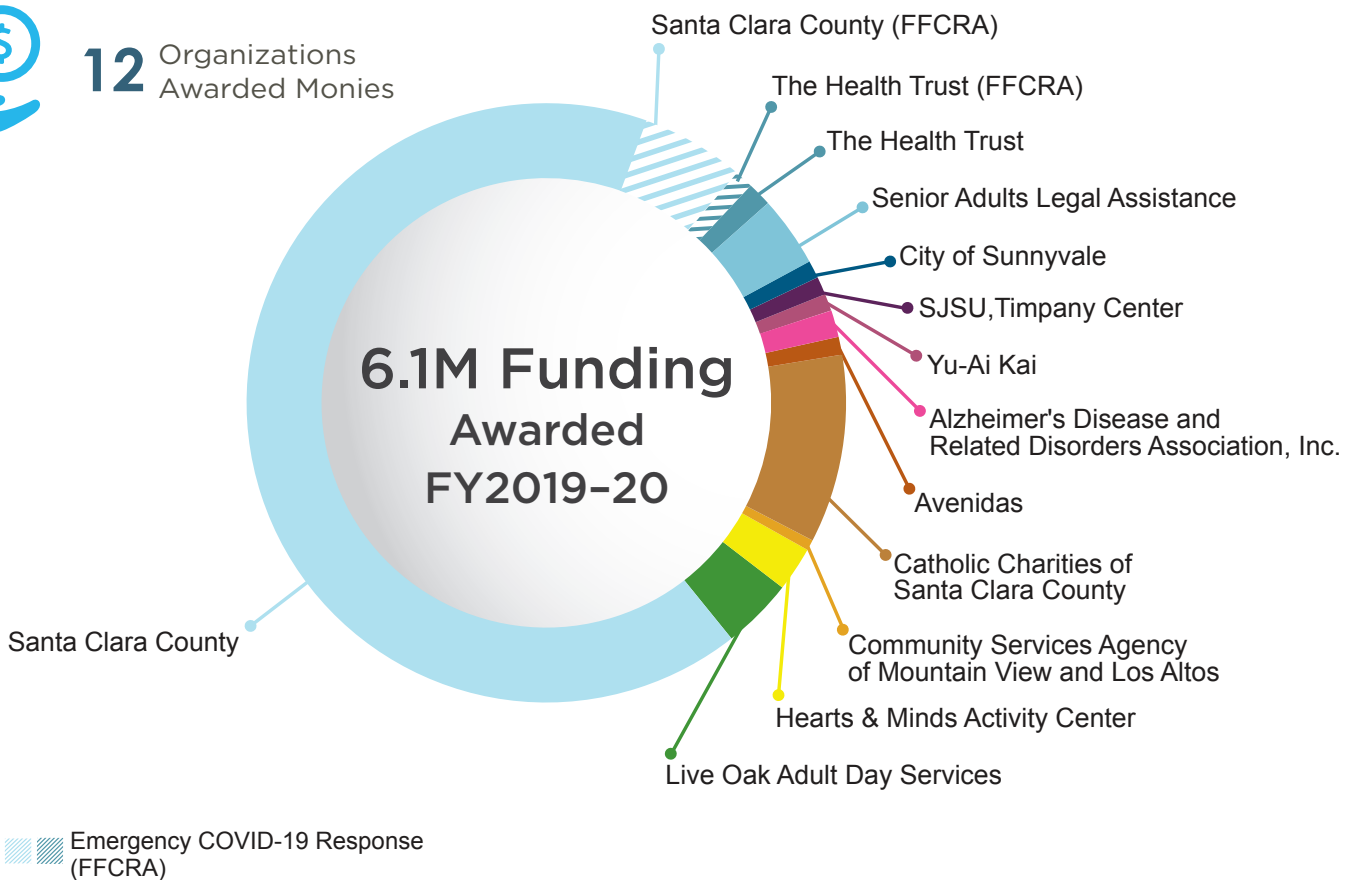
At **Sourcewise**, we collaborate with Santa Clara County, state, and local network of community partners to provide a streamlined approach to culturally and ethnically diverse services and support systems. We empower older adults and caregivers by providing access to comprehensive information, allowing for personal choices, and continued independence. We aim to provide a community-based system of care that crosses city boundaries, income levels, geography, and special interests.

As a **funder**, each year, we invest in over a dozen partnering community-based organizations through annual grants to expand service offerings of vital programs and services which meet the diverse needs of the Santa Clara County older adult and caregiver population.

## Community Impact



**12** Organizations Awarded Monies



### Vital Programs and Services delivered in partnership:

- Adult Day Care/Health Services
- Caregiver Education & Resources
- Caregiver Training
- Grandparent Caregiver Support
- Case Management
- Disease Prevention & Health Promotion
- Senior Legal Services
- Long-Term Care Ombudsman Services
- Congregate Meal Nutrition Services
- Home Delivered Meal Nutrition Services

# Our Goal

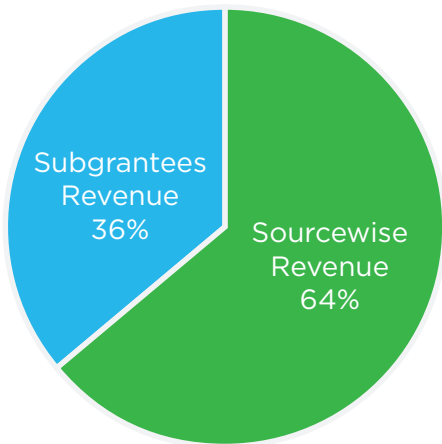
Our goal is to provide leadership addressing issues that relate to older Californians; develop community-based systems of care that provide services which support independence within California's interdependent society; Protect the quality of life of older persons and persons with functional impairments and to promote citizen involvement in the planning and delivery of services.



From July 01, 2019 through June 30, 2020, Sourcewise helped **100,235** seniors and caregivers in Santa Clara County.

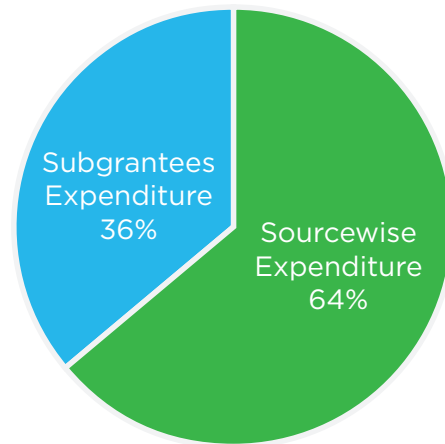
## Sourcewise & Subgrantee Total Revenue FY 2019-2020

**Total Revenue:** \$8,491,823  
**Subgrantee Revenue:** \$5,471,894



## Sourcewise & Subgrantee Total Expenditure FY 2019-2020

**Total Expenditure:** \$8,574,939  
**Subgrantee Expenditure:** \$5,471,894



COVID-19 caused unplanned expenses for technology and infrastructure. In 2020-2021 Sourcewise is focusing efforts on increasing support from volunteers, community partnerships, and contributions.

### Funding Received:

- Administration for Community Living
- California Department of Aging
- United States Department of Agriculture
- California Health Advocates Grant Stipend
- County of Santa Clara (PA IHSS and AB 1682)
- California Department of Food & Agriculture
- City of San Jose
- Client Contributions
- Individual Donations

# Who We Are

Sourcewise is one of thirty-three Area Agency on Aging in California and one of six nonprofit organizations in the state providing a comprehensive network of services for older adults, adults with disabilities and caregivers. As a nonprofit organization, we believe in the importance of community. Everyone should have access to information and supportive services that allows for personal choices and continued independence to lead a dignified life.



## COVID-19 Response



### From April 2020–June 30, 2020

Families First Coronavirus Response Act (FFCRA) (H.R. 6201) emergency nutrition funding to respond to growing nutritional needs of older adults during the COVID-19 pandemic.



**\$400,320**  
funding awarded



**79,599**  
additional meals served

# Sourcewise Impact, Fiscal Year 2019-2020



[mysourcewise.com](https://mysourcewise.com) Access your resource options within our online resource directory.

From July 01, 2019 through June 30, 2020 we helped 100, 235 Santa Clara County older adults, caregivers, and their families. Sourcewise would like to acknowledge and thank our individual and corporate partners for believing in our agencies mission to provide education, expertise and quality support services.

## Organizations

Apple	Google	Oracle	Silicon Valley Bank
Bay Area Youth Music Society	JUUL Labs	Patricia Ann Brennan Foundation	Swinerton
BlackRock	Micron Technology	Salesforce	The Davidson Family Foundation
Fidelity Charitable	Netflix	Samsung	Veeva
Genentech	Network for Good	SAP	
	Okta		

## Individual Donors

A Elfrink	Bonnie Cheung	Francine Rosen	Kristen Chui	Rennels Glenn
Aaron Zhang	Carla Montenegro	George Lui	Kyin Fong	Shannon Herrera
Aishwariya Jayakumar	Carlo Tedesco	Haedar Hadi	Marcie Colonna	Silvia Franco
Alan Ross	Connie M Oshiro	Isabelle Blanchard	Mary Tinker	Sonya Casares
Amber Chang	Dion Stoia	Jia Ma	Min Tao	Stephen Dippel
Amy Cheong	Edith Gong	Jose A Dena	Mohit Maheshkumar Bansal	Suresh Sankar
Aneliza Del Pinal	Elaine Kawasaki	Julija Bagdonaite	Praveen Gowda	William Coyne
Angela Tsang (Lei Gui)	Enchin Lee	Karen Woodbeck	Priyank Mishra	Yan Gutzman
Anita Gong	Eric Smadja	Katherine Reck	Rachana Patel	Yu Kang
Audrey Nguyen	Flona Tsang (Lei Gui)	Kim Ooi		

## Sourcewise Programs

Information & Awareness

Meals on Wheels

Senior Employment Services

Caregivers Network

Care Management

Health Insurance Counseling & Advocacy Program

Public Authority Services

CalFresh Application Assistance

Sourcewise is a 501(c)(3) nonprofit organization. We are non-partisan and do not endorse political candidates. Donations to Sourcewise are tax deductible.



SOURCEWISE  
COMMUNITY RESOURCE SOLUTIONS

■ 3100 De La Cruz Blvd, Suite 310  
Santa Clara, CA 95054  
(408) 350-3200

■ 16340 Monterey Road  
Morgan Hill, CA 95037  
(408) 762-7362

[mysourcewise.com](http://mysourcewise.com)