

2023
2024

Annual Report



A Year of Service in Santa Clara County



SOURCEWISE
COMMUNITY RESOURCE SOLUTIONS



CONTENTS

- 3** Statement from Our CEO
- 4** Our Values
- 5** Our Mission
- 6** Services Offered
- 7** Fiscal Year 2023-2024 Highlights
- 8** Community Service Access Points
- 10** Hear Directly from Our Clients
- 12** Volunteer Highlights
- 14** Community Impact

STATEMENT FROM OUR CEO



In 2024, Sourcewise proudly served 104,652 individuals through 18 direct programs and services across seven core categories: Nutrition, Caregivers, Health, Medical and Evidence-Based Programs, Supportive Services, Workforce Development, Advocacy, and Isolation and Digital Inclusion.

These programs are not standalone efforts—they are strategically designed to work together, forming a comprehensive suite of person-centered supports that empower individuals to age with dignity, safety, and connection in their communities. Whether it's a caregiver who receives case management, respite, and ongoing training to support their caregiving journey or an older adult accessing both digital literacy and nutrition services at their local community center, our integrated approach supports an ecosystem that delivers greater value for each client.

This year, we launched our Intergenerational Activities program, connecting volunteers with older adults for friendly home visits, home beautification projects, digital literacy coaching, and social engagement activities. We also reaffirmed our commitment to innovation by developing solutions that meet people where they are. With support from CalGrows funds, we introduced WeCare, an on-demand training platform designed to support busy caregivers with flexible, accessible, on-demand learning. In alignment with the State's Career Pathways initiative, we expanded virtual programming to help professional caregivers grow their skills and advance their careers.

At Sourcewise, we believe that aging is a journey best supported by a network of care, compassion, and opportunity. Our work is rooted in the belief that every older adult deserves to thrive in every stage of life.

This is made possible by the dedication of our 6 Board members, 95 diverse staff, 1,700 volunteers, a passionate Advisory Council, and a strong network of community partners.

Aneliza Del Pinal
Sourcewise CEO

BOARD OF DIRECTORS

Jeff Tepper
President

Sonya Casares
First Vice President

Robert MacLaughlin
Second Vice President

Matthew Woodruff
Treasurer

Michal Ann Mendoza
Board Member

Heather Severson-Tanez
Board Member

ADVISORY COUNCIL

Martha Artiles
Chair

Liz Ayala
Vice Chair

Richard Adler
Secretary

Aiysha Ahmed

Amruta Hendre
Dick Konard

Dyanne Hofstad
Ellen Rollins

Gabrielle Antolovich
Gail Anne Osmer

Gary McDowell
Jane Locascio

Jayne Cohen
Jean Bedord

Lydia Norcia
Matthew Hudes

Maureen Heath
Nancy Biagini

Rose Amador
Sam M. Saiu

Somayeh Bolourchi
Sandra DeLateur

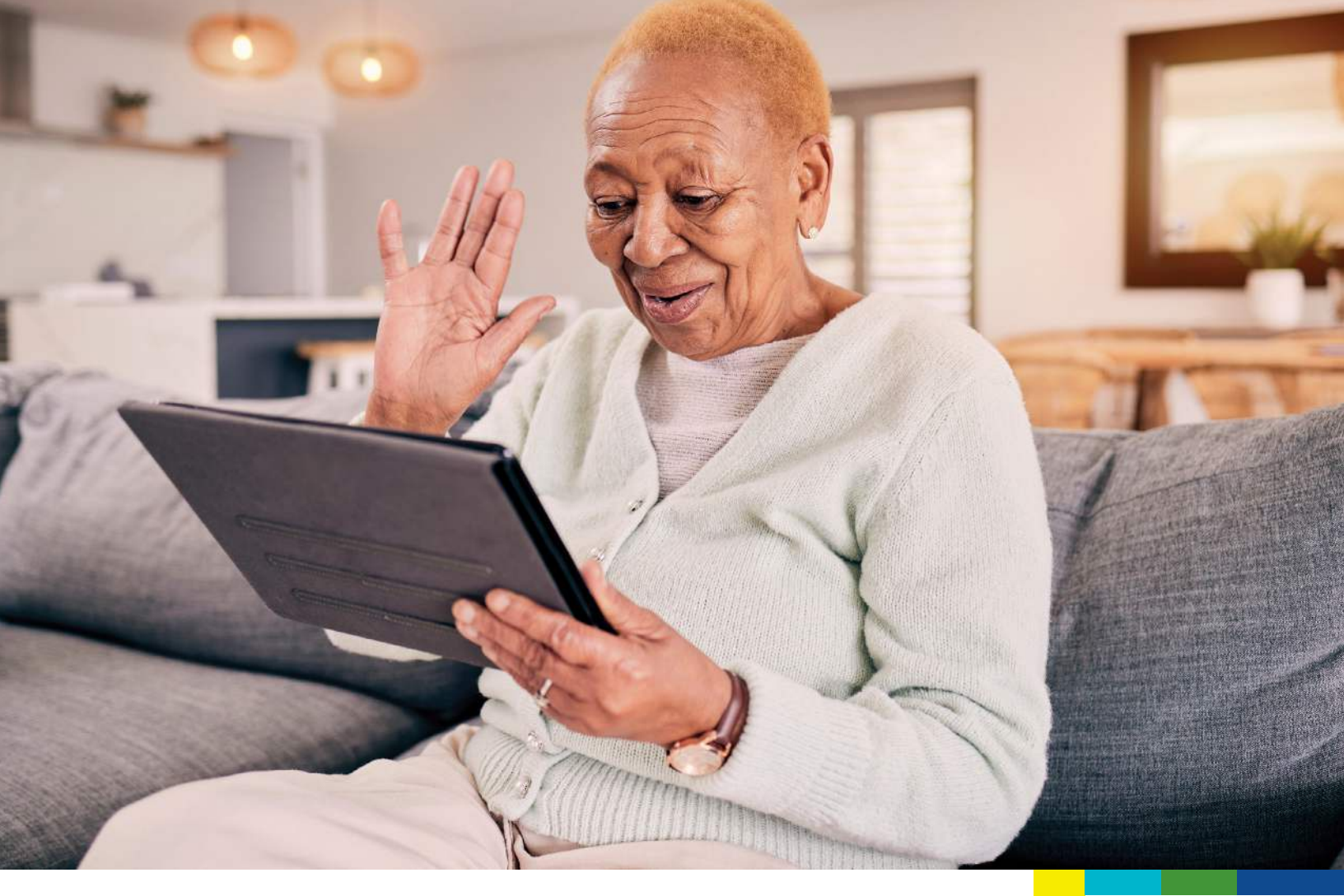
Shirley Loffer
Steve Kline

Tom Picraux
Trisha Lam

Van Lan Truong

OUR VALUES





OUR MISSION

Our mission is to provide adults and their caregivers with the tools and services they need to effectively navigate their health and life options. Through a comprehensive network of resources, Sourcewise strives to educate, prepare, support, and advocate for all adults, their families, and their caregivers within Santa Clara County.

SERVICES OFFERED



Supportive
Services



Caregivers



Health, Medical, and
Evidence Based



Nutrition



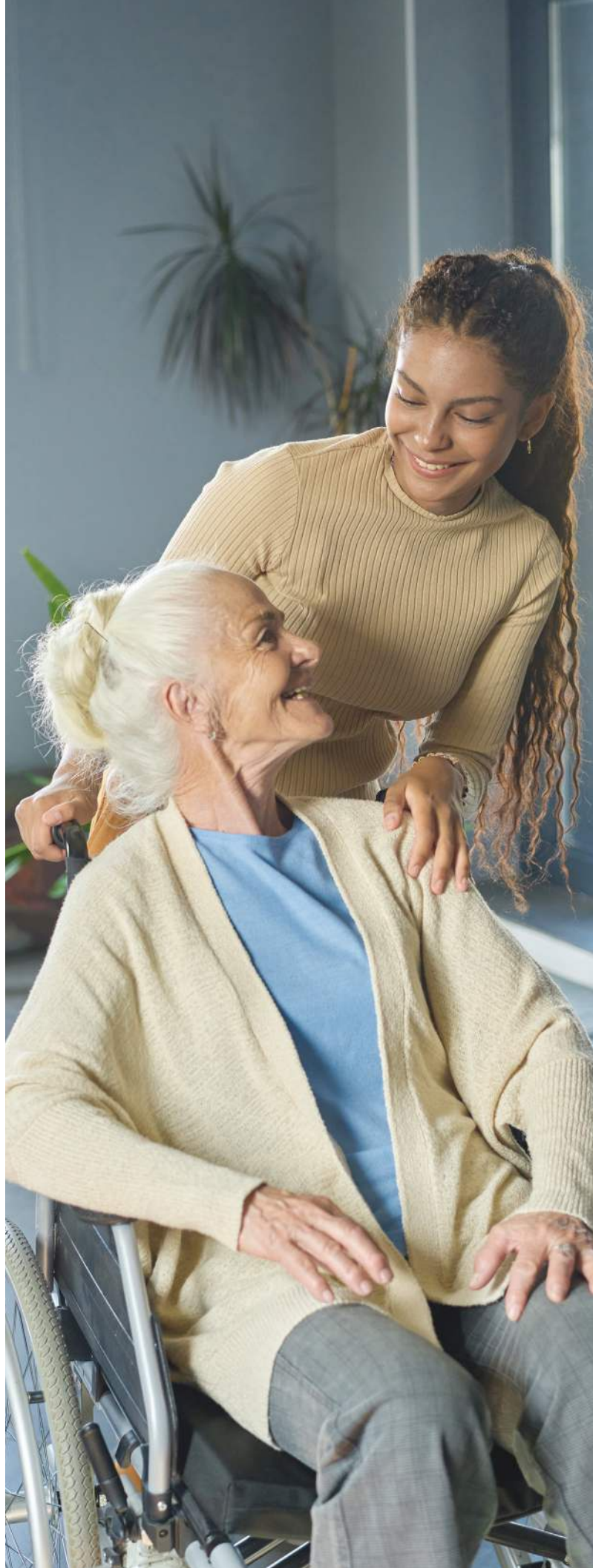
Advocacy



Isolation and
Digital Inclusion



Workforce
Development



FISCAL YEAR 2023-2024 HIGHLIGHTS



104,652

total individuals
served by Sourcewise



900

individuals received
case management &
coordination services



23,719

individuals received
personalized referrals for
resources



673,050

nutritious meals
delivered to homebound
seniors



1,766

individuals received
Medicare counseling



1,471

individuals participated in
SNAP-Ed classes to lead
healthier lives



90

individuals received fall
prevention and home
modification services



2,936

of hours of respite for
caregivers and their
loved ones



559

hours of training provided to

6,430

IHSS care providers via Career Pathways

COMMUNITY SERVICE ACCESS POINTS

As the Area Agency on Aging in Santa Clara County, we collaborate with our local and state network to ensure access and support to vital community based programs and services. Our ability to make lasting connections with our community is only possible by meeting you where you are.



Sourcewise Locations

Santa Clara Office
Morgan Hill Office



HICAP Counseling Sites

Sunnyvale Senior Center
Yu-Ai Kai/Akiyama Wellness Center
Willow Glen Community Center



Digital Link Sites

Gilroy Senior Center
Ginzton Terrace Mountain View
Santa Clara Senior Center
Vietnamese American Services Center



SNAP-Ed Sites

Almaden Community Center
Alviso Community Center
Berryessa Community Center
Camden Community Center
Evergreen Community Center
Los Gatos Community Center
Mayfair Community Center
Morgan Hill Community and Cultural Center
Mountain View Community Center
Portuguese Organization for Social Services and Opportunity (POSSO)
Roosevelt Community Center
Salvation Army
Viet Tu Te Community Center
Yu-Ai Kai Community Center



Grantee Network

Asian Americans for Community Involvement (AACI)
Alzheimer's Disease and Related Disorders Association, Inc.
Avenidas
Bay Area Community Health
Catholic Charities of Santa Clara County
City of San Jose
City of Sunnyvale
Community Services Agency of Mountain View
Family Caregiver Alliance
Hearts & Minds Activity Center
Il Pastaio
Live Oak Adult Day Services
Loaves & Fishes Family Kitchen
Martha's Kitchen
Peninsula Volunteer, Inc.
San Jose State University - Timpany Center
Santa Clara County Senior Nutrition Program
Senior Adult Legal Assistance (SALA)
The Health Trust
Yu-Ai Kai



Caregivers Support Group

Cupertino Senior Services



South County Transit Service Routes

City of Gilroy
City of Morgan Hill
City of San Martin
Gilroy Senior Center
Centennial Recreation Center

Bay Area
Community Health
San Francisco

Alviso Community
Center

Cupertino Senior
Services

Catholic Charities of
Santa Clara County

Sourcewise

Alzheimer's Disease and Related
Disorders Association, Inc.

Loaves & Fishes
Family Kitchen

Senior Adult Legal
Assistance (SALA)

Santa Clara
Senior Center

Cupertino Senior
Services

City of Sunnyvale

Sunnyvale
Senior Center

Berryessa
Community Center

Bay Area
Community Health

Bay Area
Community Health

Bay Area
Community Health

Bay Area
CommunityHealth

Il Pastaio

Yu-Ai Kai

Portuguese Organization for Social
Services and Opportunity (POSSO)

Roosevelt
Community Center

Santa Clara County
Senior Nutrition Program

Salvation
Army

City of San Jose

Viet Tu Te
Community Center

Asian Americans for
Community
Involvement (AACI)

The Health Trust

Martha's Kitchen

Bay Area
Community Health

Evergreen
Community
Center

San Jose State University
Timpany Center

Hearts & Minds
Activity Center

Live Oak Adult
Day Services

Vietnamese
American
Service Center

Willow Glen
Community &
Senior Center

Bay Area
Community Health

Camden Community
Center

Bay Area
Community Health

Gilroy Senior Center

City of Gilroy

Los Gatos
Community Center

Almaden
Community Center



HEAR DIRECTLY FROM OUR CLIENTS

In the 2023-24 Fiscal Year, Sourcewise was proud to offer an array of 18 direct programs and services across 7 categories. Each program and service has a unique set of eligibility criteria and seeks to address a specific need in the community.



Micheal

Meals on Wheels Participant

“Excellent and nutritious meals. Right amount of protein and vegetables. Always delivered on time. Thank you for giving me such good food to keep me healing!”



Jenny

Family Caregiver

“The Caregivers Network care manager was very kind and knowledgeable. She was very helpful when I had a question and would refer me accordingly to our needs. The monthly caregiver meetings were very helpful and a very good support group.”



Ha

In-Home Supportive Services
Caregiver

“Great class [Vietnamese Safe Lifting and Transferring], contained lots of good information and I appreciate having classes that are in Vietnamese. I also appreciate Public Authority Services now having a Vietnamese speaker to help with registration and questions.”

"I was an end-stage Lewy Body Dementia caregiver for my Mum from 2020 (after I served as my Dad's primary cancer caregiver until he passed) until she passed at the very end of Feb 2024. I wish I had the support by Sourcewise from the beginning - especially the WeCare program. Only due to my Dad's stage 4 laryngeal cancer having been referred to Stanford did we get the amazing supportive care resources. However, so much of the knowledge needed to find caregiver respite care, mental support was through trial and error and led to a serious illness and an ER visit for myself before getting the appropriate care!"



Fiona
Family Caregiver



Senior Employment
Host Agency

"Participant has brought enrichment to the community. We've seen a positive shift within our community since the participant joined. Participant has been instrumental in engaging and energizing our residents, leading activities that they look forward to and enjoy. Participant has fostered a strong sense of connection and involvement, which has had a lasting impact on the community's overall well-being"

"Thank you Sourcewise for being prompt, thorough, and informative - can't get any better than that."



Jeff
Resident of
Santa Clara County

VOLUNTEER HIGHLIGHTS

At Sourcewise, volunteers enable us to expand our reach in the community in order to serve as many clients as possible. Each volunteer brings with them their own skillset, background, and unique perspective that makes them an invaluable addition to any volunteer project or program.



140,271 total in-kind estimated value



111,322 handwritten cards donated to older adults



6,011 total hours of service



1,769 total volunteers



9 home beautification projects completed

"I am beyond grateful and appreciative of the opportunity I was given to intern at Sourcewise. As social activities intern for the summer of 2024, I had the privilege of assisting in many events such as social activity, digital literacy, and home beautification. These three services are just the few that I got to personally participate in. Before this internship, I wasn't sure what a career in Public Health could possibly be.

Through my internship I gained patience and understanding. Working with a diverse group of seniors can sometimes be a challenge, but I found it important to be patient and allow them time to express how they feel. I additionally learned how important it is to receive client feedback/data. Being able to directly help a priority population and see what services that population needs most has taught me a lot about Public Health.

Thank you Sourcewise for your impact on my education!"

Valeria Perez
Former Community Development Intern

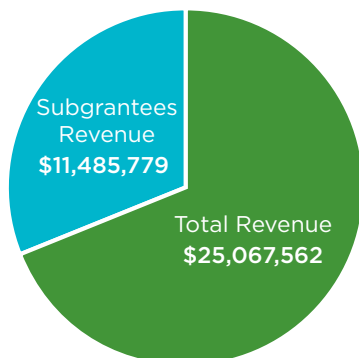


COMMUNITY IMPACT

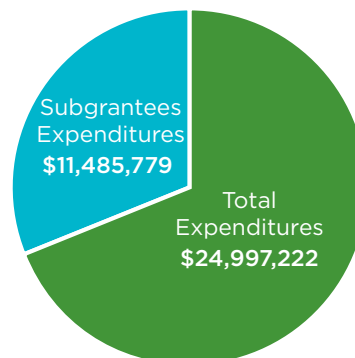
Sourcewise invests in 18 partnering community-based organizations through annual grants to expand service offerings of vital programs and services which meet the diverse needs of the Santa Clara County older adult and caregiver population.

Organizations	Awarded Funding
Santa Clara County Senior Nutrition Program	\$7,878,016
Catholic Charities of Santa Clara County	\$805,404
The Health Trust	\$655,240
Senior Adults Legal Assistance	\$486,348
Live Oak Adult Day Services	\$471,045
Hearts & Minds Activity Center	\$221,348
Avenidas	\$178,566
San Jose State University Research Foundation - Timpany Center	\$120,664
City of Sunnyvale	\$97,519
Martha's Kitchen	\$83,271
Community Services Agency of Mountain View	\$77,030
Yu-Ai Kai	\$76,950
Il Pastaio	\$72,618
Alzheimer's Disease and Related Disorders Association, Inc.	\$71,396
Loaves & Fishes Family Kitchen	\$56,418
Peninsula Volunteers, Inc.	\$53,172
Family Caregiver Alliance	\$47,972
Asian American Community for Involvement	\$7,883
Total \$11,460,860	

Sourcewise & Subgrantee
Total Revenue FY 2023 - 2024



Sourcewise & Subgrantee
Total Expenditures FY 2023 - 2024



Sourcewise would like to acknowledge and thank our individual and corporate partners for believing in our agency’s mission to provide education, expertise, and quality support services.

Funding Received

- | | |
|--|---|
| ■ Administration for Community Living | ■ California Department of Food and Agriculture |
| ■ Anthem | ■ United States Department of Agriculture |
| ■ Santa Clara Family Health Plan | ■ County of Santa Clara |
| ■ California Department of Aging | ■ Client Contributions |
| ■ California Department of Social Services | ■ Individual Contributions |

Organizations

- | | |
|----------------------------------|---|
| ■ Apple | ■ The Gloria & Michael Chiang Charitable Fund |
| ■ The Davidson Family Foundation | ■ United Way Bay Area |

Individual Donors

- | | | |
|--|-------------------------------------|----------------------------------|
| ■ Aditya Samant | ■ Glenn Rennels | ■ Michelle Mai |
| ■ Ashley Rice | ■ GM Consulting
(Gretchen Malay) | ■ Ms. Carolyn L.
Swithenbank |
| ■ Ava Geddes | ■ Jack Collins | ■ Priscilla and Ross
Campbell |
| ■ Brian Potter | ■ Juanluiz Ramirez | ■ Ryan Gibo |
| ■ Charles & Carolyn | ■ Julie Gudde | ■ Sara Johnson |
| ■ Chey McKinzie | ■ Kai Ying Fung | ■ Sarah Oliver |
| ■ David Anderson | ■ Karen Woodbeck | ■ Sibrina Romain |
| ■ Debbie Gong-Guy | ■ Katelynn Vu | ■ Susan Faris |
| ■ Donald Lewis | ■ Kimberly Battenberg | ■ Susan Kay Burnett |
| ■ Edward A Firestone | ■ Laura Hahn | ■ Virginia Sarfon Alonso |
| ■ Emergency & Health
Training Center
(Quan Ta) | ■ Lorna Brown | ■ Wai Fan-Bruno |
| | ■ McKenna Griffin | |

Grant Funders (Excluding CDA Funding)

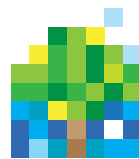
- | | |
|--|------------------------------------|
| ■ Habitat for Humanity East Bay Silicon Valley | ■ Porter Family Giving Fund |
| ■ Kaiser Permanente | ■ Riverside County Office on Aging |



Thank you to everyone who has supported us and contributed to the mission of Sourcewise.

We believe that our success does not depend on what we say, what we hear, what we feel, nor what we see.

It depends on what we do.



SOURCEWISE
COMMUNITY RESOURCE SOLUTIONS

3100 De La Cruz Blvd, Suite 310
Santa Clara, CA 95054
P: (408) 350-3200

16340 Monterey Road
Morgan Hill, CA 95037
P: (408) 762-7362



mysourcewise.com